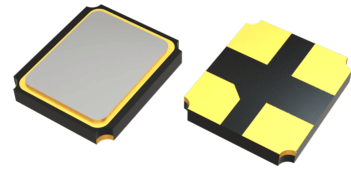


# SMD Seam Sealed Crystals

Quartz Crystal

## Features:

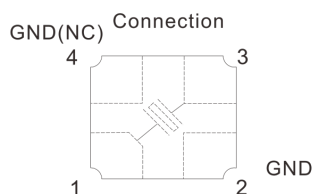
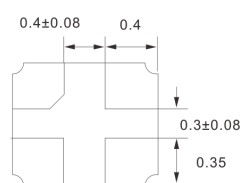
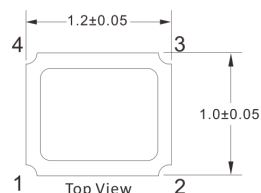
- Size 1.2 × 1.0, ultra miniature and lightweight SMD crystal with a low profile of 0.33mm
- Seam with vacuum Sealed for Ultra-small size
- High precision and high reliability
- Automatic mounting is possible
- Reflow is possible
- RoHS Compliant / Pb Free



## Specifications:

Parameter Name	Value
PAD	4
Frequency	32MHz
Mode of Oscillation	AT Fundamental
Load Capacitance(CL)	9.3pF
Frequency Tolerance(at 25°C)	±40ppm
Operating Temperature Range	-40~+85°C
Frequency Stability Over Temperature Range	±30ppm
Equivalent Series Resistance(ESR) max.	150Ω
Special Requirement	No Special Requirement
Storage Temperature Range	-55~+125°C
Shunt Capacitance(C0)	3pF Max
Drive Level (Typical)	50μW max
Aging @25°C 1st Year (Max)	±2, ±5 ppm/year

## Dimensions:



# 4pin connect to GND.NC is Open

